



Monarch 1227 Monarch 1227 Facade

LOT 250 CARISBROOK CRESCENT , ALLUVIUM , BALLARAT

HOME SIZE - 27sqqs

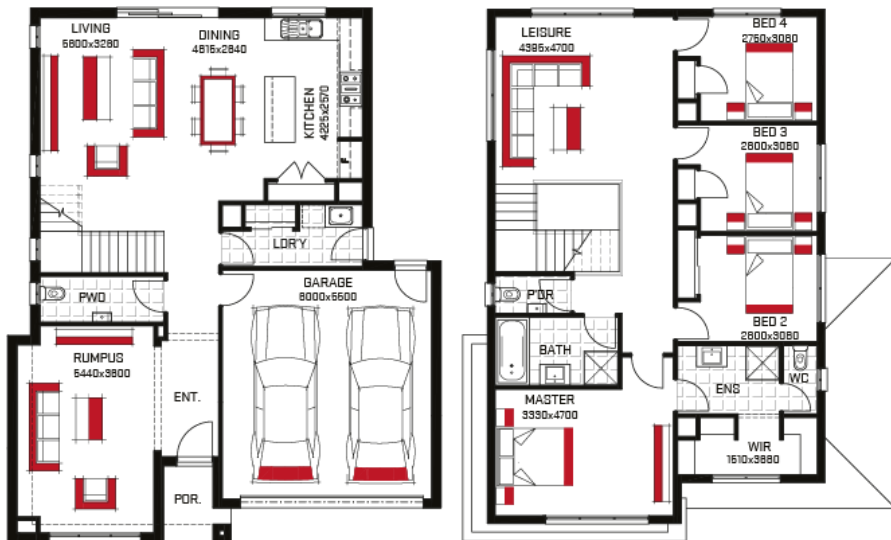
LAND SIZE - 262m2

PACKAGE PRICE

## Monarch 1227

 4
  2
  2

# \$547,596



## Your Home Inclusions

- ✓ Fixed site costs
- ✓ Floor coverings throughout
- ✓ 2590mm high ceilings
- ✓ 20mm stone to kitchen
- ✓ 900mm European appliances
- ✓ Tiled shower bases
- ✓ Vinyl sliding robes to bedrooms
- ✓ Coloured concrete driveway
- ✓ 25 year structural warranty
- ✓ Developer Guidelines & Covenants (if required)

0403 016 844 | Rob Chambers | [rob.chambers@harmacomes.com.au](mailto:rob.chambers@harmacomes.com.au) | [harmacomes.com.au](http://harmacomes.com.au)