



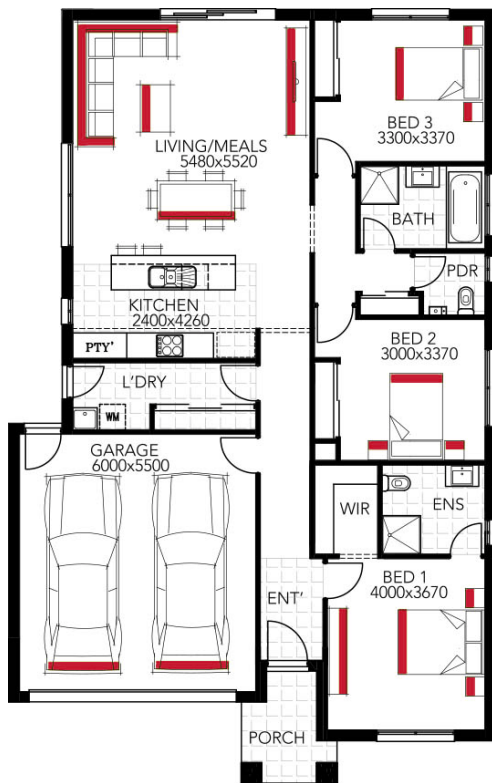
Capital 1219 Aspect Facade

LOT 119 VERBENA BLVD , ONE BELLS , CLYDE HOME SIZE - 19sqs LAND SIZE - 395m2

PACKAGE PRICE

Capital 1219 |  3  2  2

**\$576,999**



## Your Home Inclusions

- ✓ Fixed site costs
- ✓ Floor coverings throughout
- ✓ 2590mm high ceilings
- ✓ 20mm stone to kitchen
- ✓ 900mm European appliances
- ✓ Tiled shower bases
- ✓ Vinyl sliding robes to bedrooms
- ✓ Coloured concrete driveway
- ✓ 25 year structural warranty
- ✓ Developer Guidelines & Covenants (if required)

0404203773 | Dan Lock | [dan.lock@harmacomes.com.au](mailto:dan.lock@harmacomes.com.au) | [harmacomes.com.au](http://harmacomes.com.au)