



Rover 1017 Facade

LOT 1142 REVELSTOKE WAY, WINTERFIELD, WINTER VALLEY

HOME SIZE - 17sqs

LAND SIZE - 526m<sup>2</sup>

PACKAGE PRICE

Rover 1017



3

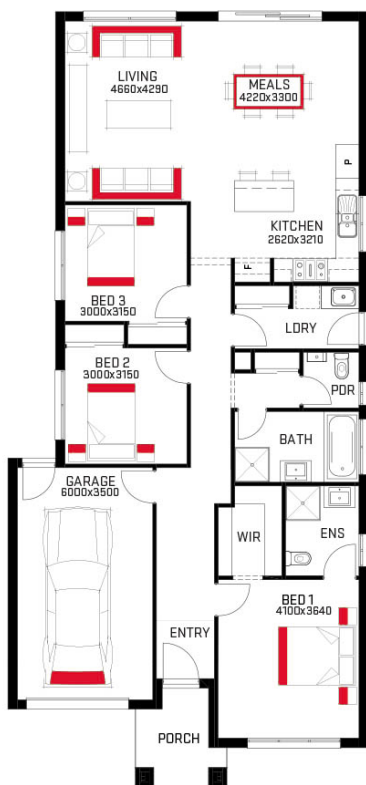


2



1

**\$470,249**



## Your Home Inclusions

- ✓ Fixed site costs
- ✓ Floor coverings throughout
- ✓ 2590mm high ceilings
- ✓ 20mm stone to kitchen
- ✓ 900mm European appliances
- ✓ Tiled shower bases
- ✓ Vinyl sliding robes to bedrooms
- ✓ Coloured concrete driveway
- ✓ 25 year structural warranty
- ✓ Developer Guidelines & Covenants (if required)

0403016844 | Rob Chambers | [rob.chambers@harmachomes.com.au](mailto:rob.chambers@harmachomes.com.au) | [harmachomes.com.au](http://harmachomes.com.au)

Image may include upgrade items and may depict fixtures, finishes and features not supplied by Harmac Homes such as landscaping and fencing. Accordingly, any prices in this flyer do not include the supply of any of those items. \*Home and Land Package price correct at time of printing and subject to change without notice. Package price excludes external lighting, telephone service, stamp duty on land, legal fees and conveyancing costs including titles and property report. Floorplan is representation of facade depicted unless otherwise stated. Harmac Homes reserves the right to alter the images or descriptions without notice. See your Harmac Homes sales consultant for full details of standard inclusions. Land supplied by developer. Land prices and availability are subject to change without notice. All home & land packages are subject to developer approval. Fast Tracked packages include strict terms and conditions, refer to [harmachomes.com.au](http://harmachomes.com.au) for details. Building licence: CDB-U 58040 HAR21873.