



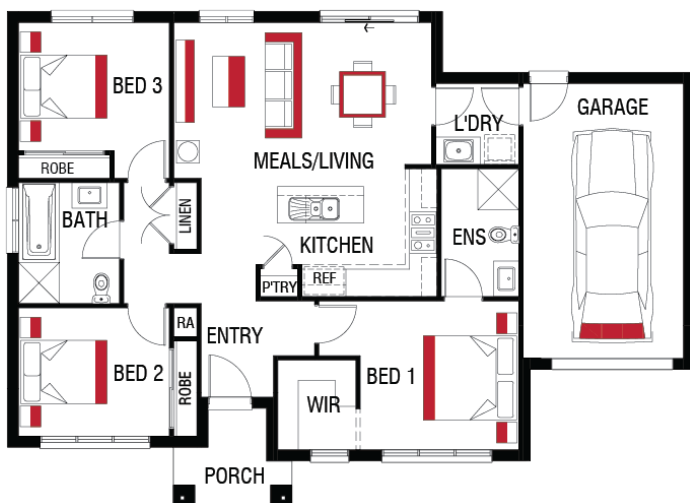
Hambleton 1614 MKII
Lot 3/6 Collier Close , Romsey

3 2 1

HOME SIZE
16 SQS

LAND SIZE
511 m²

PRICED FROM
\$573,310



The Harmac Way

- ✓ 20mm stone benchtop to kitchen
- ✓ 20mm stone benchtops
- ✓ 25 year structural warranty
- ✓ 2590mm high ceilings to ground floor
- ✓ 900mm European appliances
- ✓ Coloured concrete driveway
- ✓ Dishwasher
- ✓ Double Glazed Windows
- ✓ Floor coverings throughout
- ✓ Harmactive Smart Home Package
- ✓ Tiled shower bases
- ✓ Vinyl sliding robes to bedrooms

Michael Sokolowski

0427 854 618

michael.sokolowski@harmachomes.com.au

harmachomes.com.au

Price may not reflect images used including and not limited to such as external lighting, landscaping and fencing. Accordingly, any prices in this flyer do not include the supply of any of those items. Fencing allowance to include full share only and landscaping package option 1. *Home and Land Package price correct at time of printing and subject to change. Package price does not include telephone service, stamp duty on land, legal fees and conveyancing costs including titles and property report. Floorplan is representation of facade depicted unless otherwise stated. See your Harmac Homes sales consultant for full details of standard inclusions. Land supplied by developer. Land prices and availability are subject to change. All home & land packages are subject to developer approval. Additional site costs may apply if site survey and soil tests indicate any variances between original engineering provide at the time of the package. Building licence: CDB-U 58040 HAR21873.